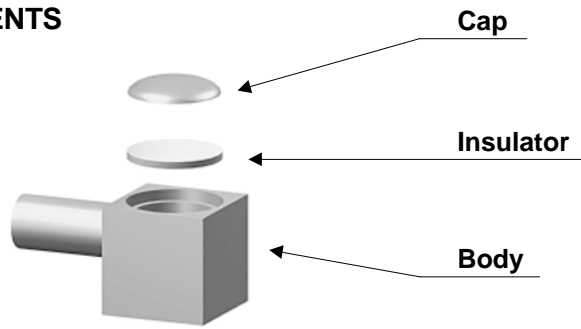
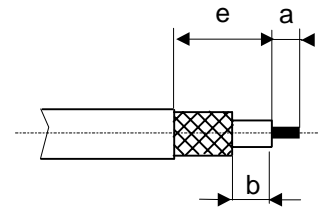


Crimp 06 : R/A direct crimping

COMPONENTS

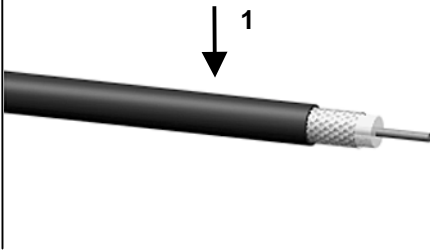


STRIPPING DIMENSIONS



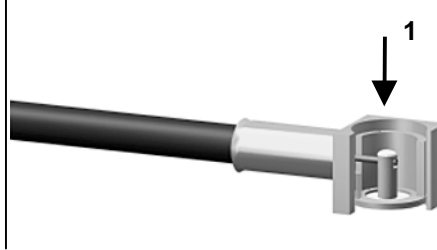
1

Strip the cable.



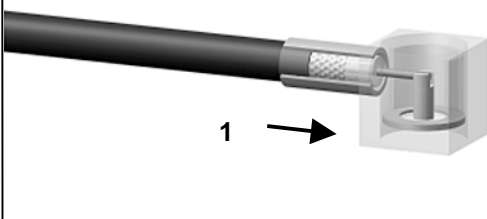
4

Solder the inner conductor.



2

Introduce the cable into the body until contact with the body shoulder.



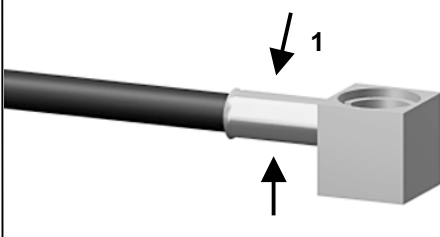
5

Place the insulator into the body.
Place the cap into the body.



3

Crimp the body on the cable.



6

Press on the cap flush or slightly below the surface of the body assembly.

